
$$V1 = V2 = (24+10) \times 30 \text{ cm} \quad L=44 \text{ m}$$

copimento de 2,5cm

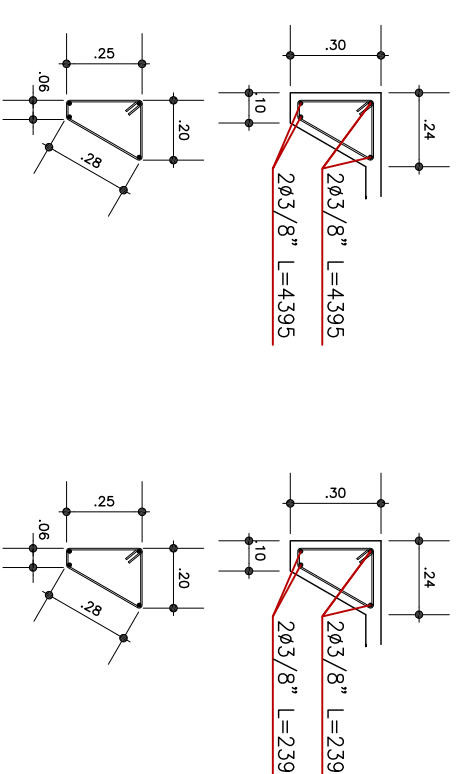
cobrimento de 2,5cm

SEÇÃO A

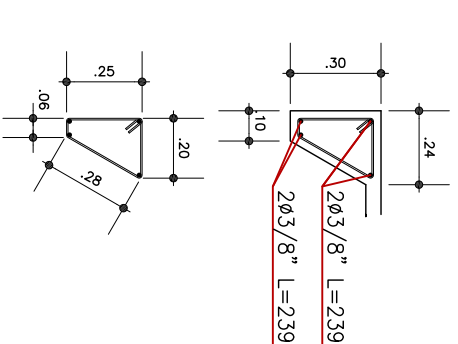
V1 = V2, V3 = V4
CONCRETO C30
Aço: CA-50-A e CA-60-B

$$v_1 = v_2, v_3 = v_4$$

Agg: CA-50-A e CA-60-B



(PARA V1 = V2)



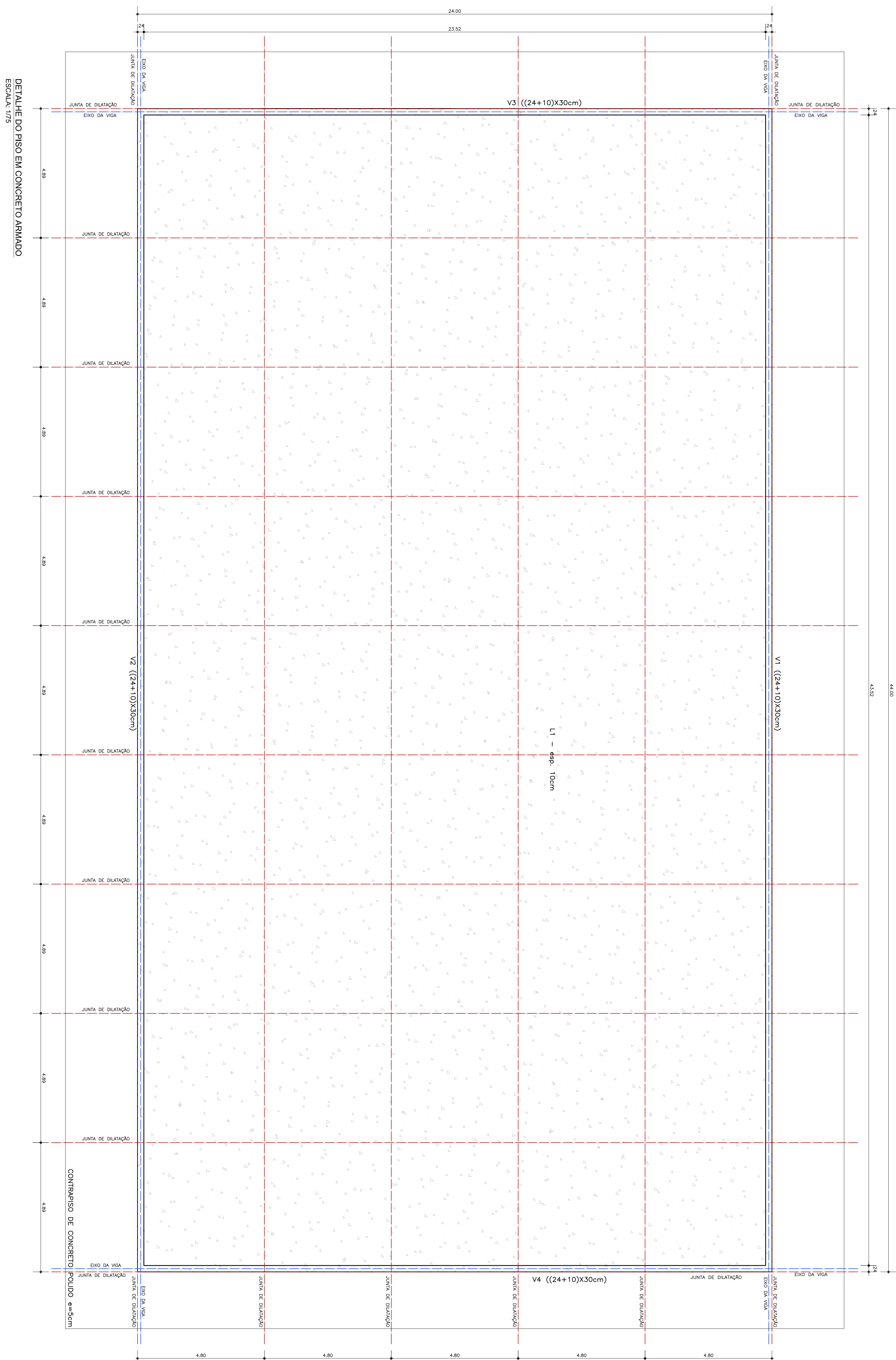
(PARA V5 = 1/4)

CORTE TRANSVERSAL
SEÇÃO A

CORTE TRANSV
SEÇÃO A

ARMADURA DAS VIGAS DE BORDA
ESCALA: 1/25

ESCALA: 1/25



ESCALA: 1/75